

**NOBLELIFT**

A Series 4.0/4.5/5.0 Ton  
**IC Forklift**



**NEW** *Noblelift Products*  
**ARRIVAL**

**NOBLELIFT INTELLIGENT EQUIPMENT CO., LTD.**

**A Series 4.0/4.5/5.0 Ton IC Forklift**

The A Series 4-5 ton IC forklift features market-proven core components for reliable performance. Designed with safety, durability, efficiency, and comfort in mind, it integrates Noblift's expertise in IC forklifts with the latest technology to deliver exceptional value and long-lasting performance.

**Powerful & Reliable Performance**

- Compatible with multiple low-emission, high-performance engines.
- Reinforced drive axle with superior casting precision and strength.
- Proven soft-connect transmission ensures smooth and reliable operation.
- Heavy-duty cast steering axle offers high load capacity and extended lifespan.

**Optimized Design for Efficiency**

- Upgraded hydraulic braking system enhances reliability and comfort.
- Extended wheelbase increases load capacity by 5%.
- Enlarged high-position air intake grille improves airflow and engine efficiency.
- Large LCD display provides real-time vehicle status monitoring.
- High-strength alloy steel mast for durability; Enhanced chain tensile strength and safety factor.

**Energy-Saving & High Efficiency**

- Enlarged hydraulic pipelines and optimized joint layout extend component lifespan.
- Dual-pump hydraulic system improves energy efficiency.
- Standard LED lighting provides energy efficiency, longevity, and reliability.
- Load-sensing technology prioritizes steering to reduce power waste.

**Enhanced Comfort & User-Friendly Features**

- Optimized cooling system with an enlarged aluminum plate-fin radiator significantly improves cooling performance.
- Standard air filter alarm alerts users for timely maintenance.
- Upgraded dual-threaded locking mechanism allows easier adjustments.
- Intelligent shifting system prevents second-gear starts (hydraulic model).

**Driver-Centric Design for Comfort**

- Optimized brake and accelerator pedals enhance driving comfort.
- Small-diameter steering wheel reduces effort and enhances ease of operation.
- Anti-slip metal pedals and other ergonomic features improve user comfort.

**Engine Configuration Table**

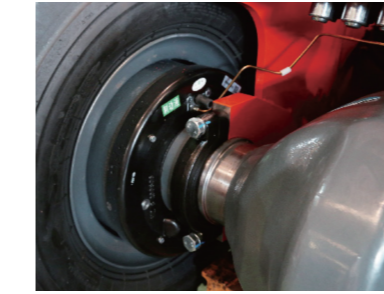
Engine Model	Quanchai V35-88C41	Mitsubishi S6S-G364CSFL	Xinchai 4E30YG52
Engine Description	(China IV)	(Euro IIIA)	(Euro V)
Engine Code	Q2	S3	X8
Power Type	Diesel	Diesel	Diesel
Power/Speed (kw/rpm)	65/2200	52/2200	55.8/2200
Torque (N.m/rpm)	350/1800	248/1700	320/1200-1600
Displacement (L)	3.47	4.966	2.97
Applicable Tonnage	4-5t	4-5t	4-5t



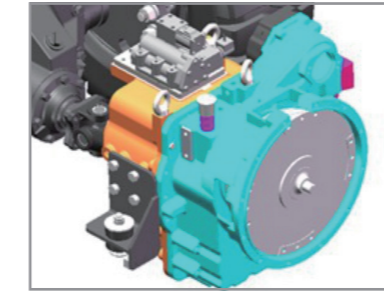
Lift cylinder cushioning for smooth handling.



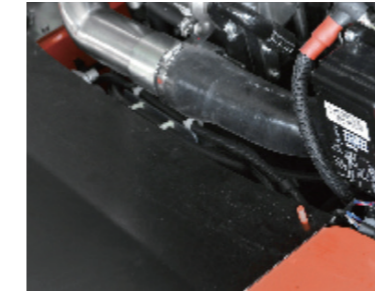
Simple reliable hood with key lock option.



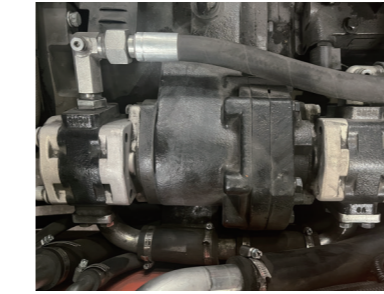
Upgraded drum brakes for improved safety and comfort.



Proven soft-link hydraulic transmission (Hydraulic Model).



Snap-fit baseplate with tool-free removal.



Dual-pump hydraulic system for reduced fuel consumption (Hydraulic Model).



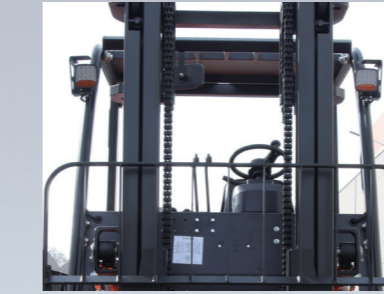
Electro-hydraulic directional switch & multifunction handle (Hydraulic Model).



Air filter alarm for timely maintenance and engine protection.



Improved locking mechanism for easy adjustments.



Wider mast for better visibility.



Large LCD display with real-time vehicle status.



High-quality rear tires for extended service life.



Anti-slip pedals and ergonomic layout for comfort.



Full LED lighting for energy efficiency and longevity.



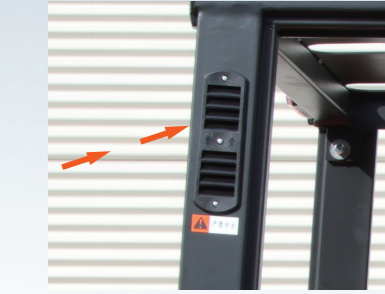
Larger grab handle for easier entry and exit.



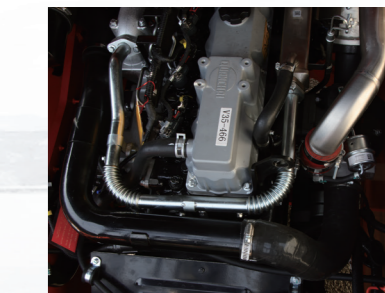
Large aluminum radiator for enhanced cooling.



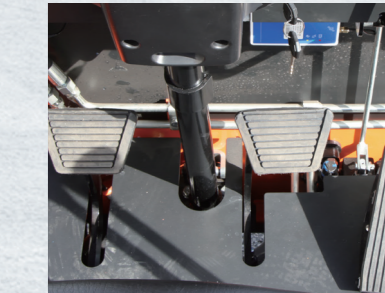
Small-diameter steering wheel for reduced operator effort.



High-position intake grille for optimized airflow.



Multiple low-emission engine options available.



Refined pedal layout for improved comfort (Hydraulic Model).

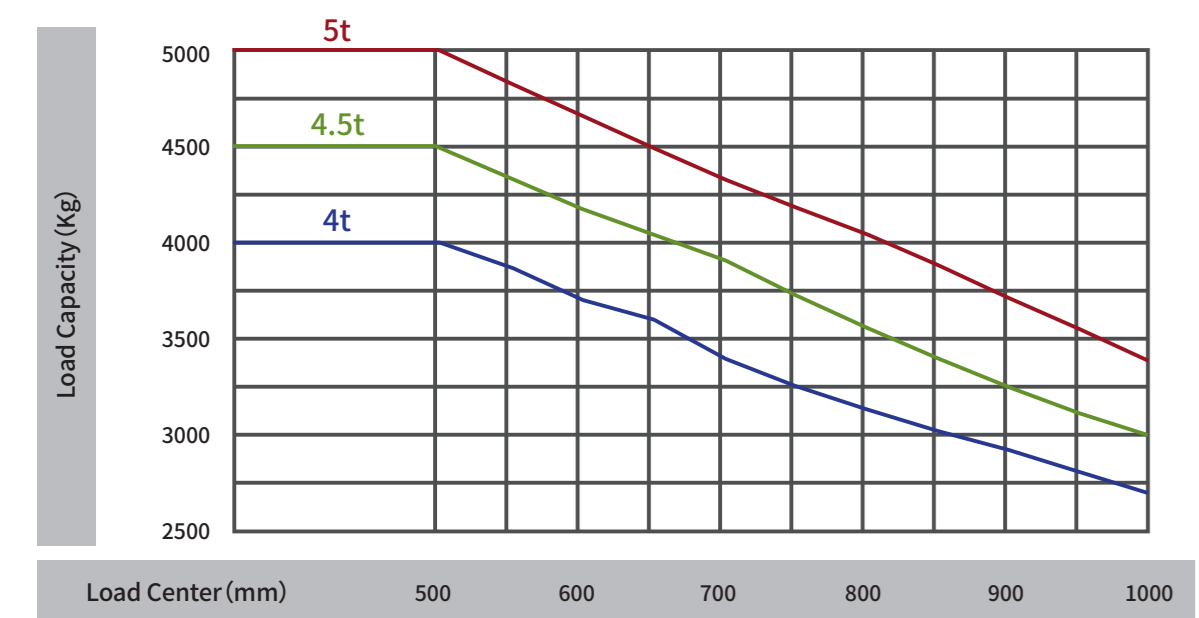
### Standard Configuration

- Wide-view mast
- Standard forks
- Standard load backrest
- Standard overhead guard
- Overhead guard rain cover
- LCD instrument panel
- Pneumatic tires
- Tow Pin
- Vehicle Tools
- LED signal lights
- Standard Seat
- Multiway Valve for dual-function
- Reversing buzzer
- Hour meter
- Adjustable tilting steering column
- Left and Right Rearview Mirrors
- Combined Instrument Panel
- Torque Converter Oil Dipstick
- Counterweight Protection Grid
- Lockable fuel tank

### Optional Upgrades

- Enclosed cabin
- Heater
- Air conditioning
- Raised Overhead Guard
- Windshield
- Metal roof
- Dual Air Filters
- Solid tires
- Dual tires
- Electric Fan
- Warning lights
- Rear Work Light
- Rearview camera, Reversing radar
- Over-speed Alarm
- Fire extinguisher
- Widened Fork Carriage
- High Exhaust
- Steering Cylinder Protection
- Tilt Cylinder Protection Boot
- User-Specified Color
- Rear Armrest Horn Button
- Half-Enclosed Seat
- Half-Enclosed Suspension Seat
- Side shifter
- Adjustable forks
- Telematics

### Load Curve Chart



**NOBLELIFT CHINA**  
 Address: 528 Changzhou Road, Taihu Sub-district, Changxing, Zhejiang 313100 China  
 Tel: 86-572-6210817 6210311  
 Fax: 86-572-6210777 6128612  
 Email: info@nobelift.com  
 Http: www.nobelift.com www.nobelift.cn




Official website    Our Wechat

All specifications and figures are subject to change without notice for improvement.

### Parameter table No.20250208

Identification	Description	Model					
		NOBLELIFT CPC(D)40-AQ2	NOBLELIFT CPC(D)45-AQ2	NOBLELIFT CPC(D)50-AQ2	NOBLELIFT CPC(D)40-AS3	NOBLELIFT CPC(D)45-AS3	NOBLELIFT CPC(D)50-AS3
1.1	Manufacture(abbreviation)	NOBLELIFT	NOBLELIFT	NOBLELIFT	NOBLELIFT	NOBLELIFT	NOBLELIFT
1.2	Manufacturer's type designation	CPC(D)40-AQ2	CPC(D)45-AQ2	CPC(D)50-AQ2	CPC(D)40-AS3	CPC(D)45-AS3	CPC(D)50-AS3
1.3	Drive:electric(battery or mains),diesel,petrol gas,manual	Diesel	Diesel	Diesel	Diesel	Diesel	Diesel
1.4	Type of operation(hand,pedestrian,standing,seated,order-picker)	Seated	Seated	Seated	Seated	Seated	Seated
1.5	Load capacity/rated load	Q(kg) 4000	4500	5000	4000	4500	5000
1.6	Load centre distance	c (mm) 500	500	500	500	500	500
1.8	Load distance,centre of drive axle to fork	x (mm) 555	555	555	555	555	555
1.9	wheelbase	y (mm) 2100	2100	2100	2100	2100	2100
2.1	Service weight incl	kg 6350(6550)	6550(6750)	6800(7000)	6350(6550)	6550(6750)	6800(7000)
2.2	Axle loading ,laden front/rear	kg 8850/1500	9700/1350	10500/1300	8850/1500	9700/1350	10500/1300
2.3	Axle loading,unladen front/rear	kg 2900/3450	2900/3650	2900/3900	2900/3450	2900/3650	2900/3900
3.1	Type:solid rubber,supereleastic,pneumatic,polyurethane	Pneumatic tire	Pneumatic tire	Pneumatic tire	Pneumatic tire	Pneumatic tire	Pneumatic tire
3.2	Tyres size,front	8.25-15-14PR	300-15-18PR	300-15-18PR	8.25-15-14PR	300-15-18PR	300-15-14PR
3.3	Tyres size,rear	7.00-12-12PR	7.00-12-12PR	7.00-12-12PR	7.00-12-12PR	7.00-12-12PR	7.00-12-12PR
3.5	Wheels,number front/rear(x=driven wheels)	2X/2	2X/2	2X/2	2X/2	2X/2	2X/2
3.6	Track width,front	b10 (mm) 1200	1200	1200	1200	1200	1200
3.7	Track width,rear	b11 (mm) 1210	1210	1210	1210	1210	1210
4.1	Mast/fork carriage tilt forward/backward	α/B(°) 6/12	6/12	6/12	6/12	6/12	6/12
4.2	lowered mast height	h1(mm) 2250	2250	2250	2250	2250	2250
4.3	Free lift	h2(mm) 150	150	150	150	150	150
4.4	Lift height	h3(mm) 3000	3000	3000	3000	3000	3000
4.4a	Lift height (Including cargo fork)	h23(mm) 3050	3050	3050	3050	3050	3050
4.5	Extended mast height	h4(mm) 4300	4300	4300	4300	4300	4300
4.7	Overhead load guardheight	h6(mm) 2250	2250	2250	2250	2250	2250
4.8	Seat height/standing height	h7(mm) 1000	1000	1000	1000	1000	1000
4.12	Coupling height	h10(mm) 390	390	390	390	390	390
4.19	Overall length (Including cargo fork)	l1(mm) 4305	4305	4305	4305	4305	4305
4.20	Overall length	l2(mm) 3235	3235	3235	3235	3235	3235
4.21	Overall width (Frame/tires)	b1(mm) 1480/1430	1480/1490	1480/1490	1480/1480	1480/1490	1480/1490
4.22	Fork dimensions	s/e/(mm) 1070/150/50	1070/150/50	1070/150/50	1070/150/50	1070/150/50	1070/150/50
4.23	Fork mounting grade	3A	3A	3A	3A	3A	3A
4.24	Width of fork rack	b3 (mm) 1380	1380	1380	1380	1380	1380
4.31	Ground clearance ,laden,under mast	m1(mm) 180	180	180	180	180	180
4.32	Ground clearance,centre of wheelbase	m2(mm) 235	235	235	235	235	235
4.34.1	Aisle width for pallets 1000×1200 crossways	Ast(mm) 4685	4685	4685	4685	4685	4685
4.34.2	Aisle width for pallets 800×1200 lengthways	Ast(mm) 4885	4885	4885	4885	4885	4885
4.35	Turning radius	Wa (mm) 2930	2930	2930	2930	2930	2930
4.36	Inside turning radius	b13(mm) 960	960	960	960	960	960
5.1	Travel speed,laden/unladen,mechanical drive	km/h /	/	/	/	/	/
5.2	Travel speed,laden/unladen,hydrodynamic drive	km/h 24/25	24/25	24/25	21/22	21/22	21/22
5.2	Lift speed,laden/unladen(hydrodynamic) Two stage gantry	mm/s /	/	/	/	/	/
5.2	Lift speed,laden/unladen(hydrodynamic) Two stage gantry	mm/s 530/560	530/560	530/560	450/500	450/500	450/500
5.3	Lowering speed,laden/unladen Two stage gantry	mm/s 400/430	400/430	400/430	410/430	400/430	400/430
5.6	Max.Drawbar pull,laden/unladen mechanical drive	kN /	/	/	/	/	/
5.6a	Max.Drawbar pull,laden/unladen hydrodynamic drive	kN 40/22	40/22	40/22	34/22	34/22	34/22
5.7	Max.Gradient performance,laden/unladen S2 mechanical drive	% /	/	/	/	/	/
5.7a	Max.Gradient performance,laden/unladen S2 hydrodynamic drive	% 26/20	26/20	26/20	22/20	22/20	22/20
5.10	Service brake	Hydraulic	Hydraulic	Hydraulic	Hydraulic	Hydraulic	Hydraulic
7.1	Engine builder	Quanchai V35-88C41 (China IV)	Quanchai V35-88C41 (China IV)	Quanchai V35-88C41 (China IV)	Mitsubishi S6S-G364CSFL (Euro IIIA)	Mitsubishi S6S-G364CSFL (Euro IIIA)	Mitsubishi S6S-G364CSFL (Euro IIIA)
7.2	Engine power rating ISO1585	kw 65	65	65	52	52	52
7.3	Rated speed	rpm 2200	2200	2200	2300	2300	2300
7.4	Number of cylinders/displacement	cm3 4/3470	4/3470	4/3470	6/4966	6/4966	6/4966
7.5a	Maximum torque	N.m/rpm 350/1800	350/1800	350/1800	248/1700	248/1700	248/1700
7.9	Nominal voltage	V 12	12	12	24	24	24
7.10	Battery capacity	V/Ah 12/120	12/120	12/120	12/80	12/80	12/80
8.1	Transmission type	Hydrodynamic	Hydrodynamic	Hydrodynamic	Hydrodynamic	Hydrodynamic	Hydrodynamic
8.2	Gear forward/backward	2/1	2/1	2/1	2/1	2/1	2/1
8.3	Shifting mode	Hydraulic	Hydraulic	Hydraulic	Hydraulic	Hydraulic	Hydraulic
10.1	Operating pressure for attachments	Mpa 18.5	18.5	18.5	18.5	18.5	18.5
10.2	Oil volume for attachments	L/min 60	60	60	60	60	60
10.4	Fuel tank volume	L 90	90	90	90	90	90
10.8	Traction pin specification DIN 15170	35	35	35	35	35	35

### Parameter table No.20250208

Identification	Description	Model		
		NOBLELIFT CPCD40-A8X	NOBLELIFT CPCD45-A8X	NOBLELIFT CPCD50-A8X
1.1	Manufacture(abbreviation)	NOBLELIFT	NOBLELIFT	NOBLELIFT
1.2	Manufacturer's type designation	CPCD40-A8X	CPCD45-A8X	CPCD50-A8X
1.3	Drive:electric(battery or mains),diesel,petrol gas,manual	Diesel	Diesel	Diesel
1.4	Type of operation(hand,pedestrian,standing,seated,order-picker)	Seated	Seated	Seated
1.5	Load capacity/rated load	Q(kg) 4000	4500	5000
1.6	Load centre distance	c (mm) 500	500	500
1.8	Load distance,centre of drive axle to fork	x (mm) 555	555	555
1.9	wheelbase	y (mm) 2100	2100	2100
2.1	Service weight incl	kg 6350(6550)	6550(6750)	6800(7000)
2.2	Axle loading ,laden front/rear	kg 8850/1500	9700/1350	10500/1300
2.3	Axle loading,unladen front/rear	kg 2900/3450	2900/3650	2900/3900
3.1	Type:solid rubber,supereleastic,pneumatic,polyurethane	Pneumatic tire	Pneumatic tire	Pneumatic tire
3.2	Tyres size,front	8.25-15-14PR	300-15-18PR	300-15-14PR
3.3	Tyres size,rear	7.00-12-12PR	7.00-12-12PR	7.00-12-12PR
3.5	Wheels,number front/rear(x=driven wheels)	2X/2	2X/2	2X/2
3.6	Track width,front	b10 (mm) 1200	1200	1200
3.7	Track width,rear	b11 (mm) 1210	1210	1210
4.1	Mast/fork carriage tilt forward/backward	α/B(°) 6/12	6/12	6/12
4.2	lowered mast height	h1(mm) 2250	2250	2250
4.3	Free lift	h2(mm) 150	150	150
4.4	Lift height	h3(mm) 3000	3000	3000
4.4a	Lift height (Including cargo fork)	h23(mm) 3050	3050	3050
4.5	Extended mast height	h4(mm) 4300	4300	4300
4.7	Overhead load guardheight	h6(mm) 2250	2250	2250
4.8	Seat height/standing height	h7(mm) 1000	1000	1000
4.12	Coupling height	h10(mm) 390	390	390
4.19	Overall length (Including cargo fork)	l1(mm) 4305	4305	4305
4.20	Overall length	l2(mm) 3235	3235	3235
4.21	Overall width (Frame/tires)	b1(mm) 1480/1480	1480/1490	1480/1490
4.22	Fork dimensions	s/e/(mm) 1070/150/50	1070/150/50	1070/150/50
4.23	Fork mounting grade	3A	3A	3A
4.24	Width of fork rack	b3 (mm) 1380	1380	1380
4.31	Ground clearance ,laden,under mast	m1(mm) 180	180	180
4.32	Ground clearance,centre of wheelbase	m2(mm) 235	235	235
4.34.1	Aisle width for pallets 1000×1200 crossways	Ast(mm) 4685	4685	4685
4.34.2	Aisle width for pallets 800×1200 lengthways	Ast(mm) 4885	4885	4885
4.35	Turning radius	Wa (mm) 2930	2930	2930
4.36	Inside turning radius	b13(mm) 960	960	960
5.1	Travel speed,laden/unladen,mechanical drive	km/h /	/	/
5.2	Travel speed,laden/unladen,hydrodynamic drive	km/h 21/22	21/22	21/22
5.2	Lift speed,laden/unladen(hydrodynamic) Two stage gantry	mm/s /	/	/
5.2	Lift speed,laden/unladen(hydrodynamic) Two stage gantry	mm/s 450/500	450/500	450/500
5.3	Lowering speed,laden/unladen Two stage gantry	mm/s 410/430	400/430	400/430
5.6	Max.Drawbar pull,laden/unladen mechanical drive	kN /	/	/
5.6a	Max.Drawbar pull,laden/unladen hydrodynamic drive	kN 35/22	35/22	35/22
5.7	Max.Gradient performance,laden/unladen S2 mechanical drive	% /	/	/
5.7a	Max.Gradient performance,laden/unladen S2 hydrodynamic drive	% 22/20	22/20	22/20
5.10	Service brake	Hydraulic	Hydraulic	Hydraulic
7.1	Engine builder	Xinchai 4E30YG52 (Euro V)	Xinchai 4E30YG52 (Euro V)	Xinchai 4E30YG52 (Euro V)
7.2	Engine power rating ISO1585	kw 55.8	55.8	55.8
7.3	Rated speed	rpm 2300	2300	2300
7.4	Number of cylinders/displacement	cm3 4/2970	4/2970	4/2970
7.5a	Maximum torque	N.m/rpm 320/1200-1600	320/1200-1600	320/1200-1600
7.9	Nominal voltage	V 12	12	12
7.10	Battery capacity	V/Ah 12/120	12/120	12/120
8.1	Transmission type	Hydrodynamic	Hydrodynamic	Hydrodynamic
8.2	Gear forward/backward	2/1	2/1	2/1
8.3	Shifting mode	Hydraulic	Hydraulic	Hydraulic
10.1	Operating pressure for attachments	Mpa 18.5	18.5	18.5
10.2	Oil volume for attachments	L/min 60	60	60
10.4	Fuel tank volume	L 90	90	90
10.8	Traction pin specification DIN 15170	35	35	35

### Table of door frame parameters

Designation	Mast table	Lift height	Mast height			Free lift		Front overhang	Tilt angle	Load capacity					
			Closed mast height	Extended mast height		Without load backrest	With load backrest			Capacity table(kg)					
				Without load backrest	With load backrest					C=500mm without attachment		Single tire			
			mm	mm	mm	mm	mm	mm	forward/backward	4.0t	4.5t	5.0t	4.0t	4.5t	5.0t
			mm	4.0t/4.5t/5.0t	4.0t/4.5t/5.0t	4.0t/4.5t/5.0t	4.0t/4.5t/5.0t	4.0t/4.5t/5.0t	(°)	kg	kg	kg	kg	kg	kg
Two-stage ZT	A40/45/50/M210	2100	1800	3010	3340	150	150	555	6/12	4000	4500	5000	4000	4500	5000
	A40/45/50/M250	2500	2000	3410	3740	150	150	555	6/12	4000	4500	5000	4000	4500	5000
	A40/45/50/M260	2600	2050	3510	384										